

BAP29 Antibody
Catalog # ASC10382**Specification**

BAP29 Antibody - Product Information

Application	WB, IHC-P, IF, E
Primary Accession	Q9UHQ4
Other Accession	NP_001008405 , 56549093
Reactivity	Human, Mouse, Rat
Host	Rabbit
Clonality	Polyclonal
Isotype	IgG
Application Notes	Bap29 antibody can be used for the detection of Bap29 by Western blot at 0.5 - 2 µg/mL. Antibody can also be used for immunohistochemistry starting at 10 µg/mL. For immunofluorescence start at 20 µg/mL.

BAP29 Antibody - Additional InformationGene ID **55973****Other Names**

BAP29 Antibody: BAP29, BAP29, B-cell receptor-associated protein 29, BCR-associated protein 29, B-cell receptor-associated protein 29

Target/Specificity

BCAP29;

Reconstitution & Storage

BAP29 antibody can be stored at 4°C for three months and -20°C, stable for up to one year. As with all antibodies care should be taken to avoid repeated freeze thaw cycles. Antibodies should not be exposed to prolonged high temperatures.

Precautions

BAP29 Antibody is for research use only and not for use in diagnostic or therapeutic procedures.

BAP29 Antibody - Protein Information**Name** BCAP29**Synonyms** BAP29**Function**

May play a role in anterograde transport of membrane proteins from the endoplasmic reticulum to the Golgi. May be involved in CASP8- mediated apoptosis (By similarity).

Cellular Location

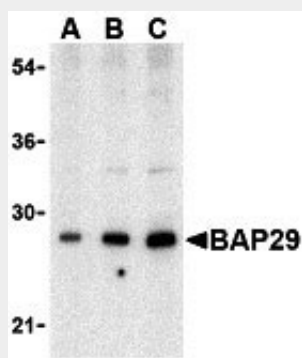
Endoplasmic reticulum membrane; Multi-pass membrane protein

BAP29 Antibody - Protocols

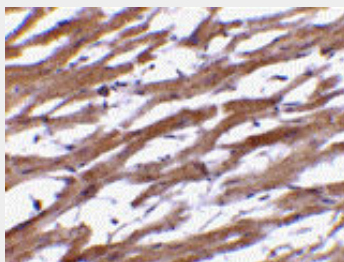
Provided below are standard protocols that you may find useful for product applications.

- [Western Blot](#)
- [Blocking Peptides](#)
- [Dot Blot](#)
- [Immunohistochemistry](#)
- [Immunofluorescence](#)
- [Immunoprecipitation](#)
- [Flow Cytometry](#)
- [Cell Culture](#)

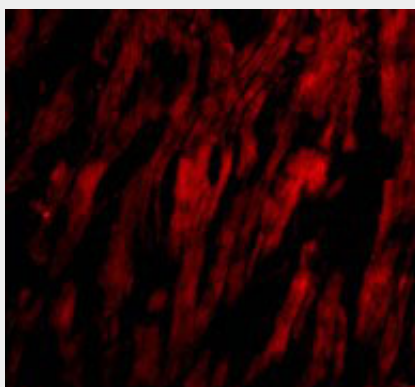
BAP29 Antibody - Images



Western blot analysis of Bap29 in human heart tissue lysate with Bap29 antibody at (A) 0.5, (B) 1 and (C) 2 µg/mL.



Immunohistochemistry of BAP29 in human heart tissue with BAP29 antibody at 10 µg/mL.



Immunofluorescence of BAP29 in Human Heart cells with BAP29 antibody at 20 µg/mL.

BAP29 Antibody - Background

BAP29 Antibody: Bap29 and the related protein Bap31 are endoplasmic reticulum (ER) and ER-vesicle membrane proteins and members of the B-cell receptor-associated protein family. These two proteins are highly homologous and can form homo- and heterodimers. Both Bap29 and Bap31 interact with membrane-bound immunoglobulins (mlgs), such as IgM and IgD, which with Ig-alpha/Ig-beta heterodimers form B cell antigen receptors. Binding of the Bap29/Bap31 heterodimer correlates with the ER retention of non-Ig-alpha/Ig-beta bound mlg complexes, suggesting that Bap29 and Bap31 may act as chaperones transmembrane regions of various proteins. Bap29 possesses multiple isoforms.

BAP29 Antibody - References

Kim KM, Adachi T, Nielsen PJ, et al. Two new proteins preferentially associated with membrane immunoglobulin D. EMBO J.1994; 13:3793-800.
Ng F, Nguyen M, Kwan T, et al. p28 BAP31, a Bcl-2/Bcl-XL- and procaspase-8-associated protein the endoplasmic reticulum. J. Cell Biol.1997; 139:327-38.
Schamel WW, Kuppig S, Becker B, et al. A high-molecular-weight complex of membrane proteins BAP29/BAP31 is involved in the retention of membrane-bound IgD in the endoplasmic reticulum. Proc. Natl. Acad. Sci. USA2003; 100:9861-6.